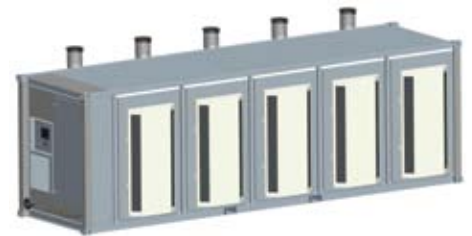


C1000 Megawatt Power Package Liquid Fuels



Achieve lower emissions and reliable electrical/thermal generation with diesel, kerosene or bio-diesel fuel.

- High electrical efficiency over a very wide operating range
- Low maintenance air bearings require no lube oil or coolant
- Ultra-low emissions
- High availability – part load redundancy
- Proven technology with tens of millions of operating hours
- Integrated utility synchronizations and protection, modular design
- 5 and 9 year factory protection plans available
- Remote monitoring and diagnostic capabilities



C1000 MicroTurbine

Electrical Performance⁽¹⁾

Electrical Power Output	1000 kW
Voltage	400 to 480 VAC
Electrical Service	3-Phase, 4-wire
Frequency	50/60 Hz, grid connect operation 10-60 Hz, stand alone operation
Maximum Output Current	1450A, grid connect operation 1550A, stand alone operation ⁽²⁾
Electrical Efficiency LHV	33%

Fuel/Engine Characteristics⁽¹⁾

Liquid Fuels	Diesel (ASTM D975-07b Grade Low Sulfur No. 1-D, 2-D) Bio Diesel (480034 Latest Revision) Aviation (ASTM D1655 Jet-A, MIL-DTL-83133E JP-8, MIL-DTL-5624U JP-5) Kerosene (ASTM D3699 1-K, JIS K2203)
Inlet Pressure	-34.5 to 34.5 kPa gauge (-5 to +5 psig)
Fuel Flow HHV	12,000 MJ/hr (11,400,000 BTU/hr)

Exhaust Characteristics⁽¹⁾

Exhaust Gas Flow	6.7 kg/s (14.7 lbm/s)
Exhaust Gas Temperature	280°C (535°F)
Exhaust Energy	7,100 MJ/hr (6,750,000 BTU/hr)

Reliable power when and where you need it. Clean and simple.

Dimensions & Weight⁽³⁾

Width x Depth x Height	2.4 x 9.1 x 2.9 m (96 x 360 x 114 in)
Weight – Grid Connect Model	14106 kg (31,000 lbs)
Weight – Dual Mode Model	17191 kg (37,900 lbs)

Minimum Clearance Requirements⁽⁴⁾

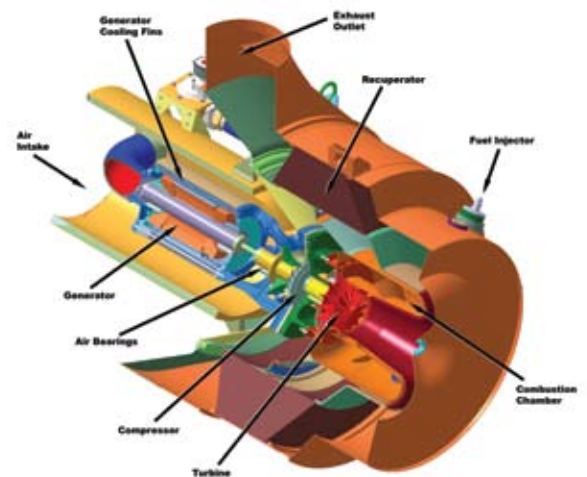
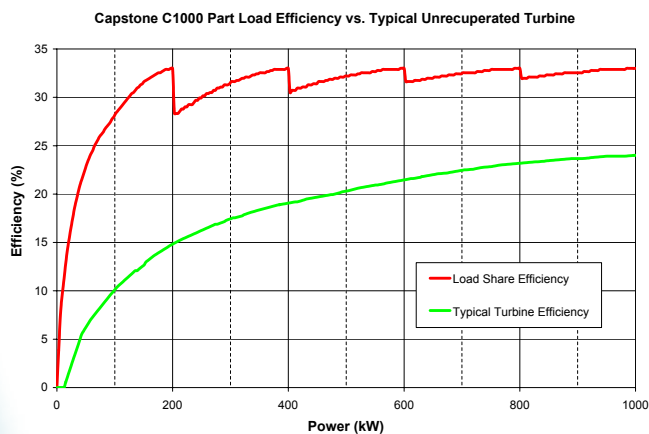
Vertical Clearance	0.6 m (24 in)
Horizontal Clearance	
Left & Right	1.5 m (72 in)
Front	1.5 m (60 in)
Rear	1.8 m (72 in)

Sound Levels

Acoustic Emissions at Full Load Power	
Nominal at 10 m (33 ft)	65 dBA

Planned Certifications

- Certified to UL 2200 and UL 1741
- Meets statewide utility interconnection requirements for California Rule 21 and the New York State Public Service Commission
- Materials Equipment Acceptance (MEA) approval for New York City
- Models available with optional equipment for CE Marking



C200 Engine

(1) Nominal full power performance at ISO conditions: 59°F, 14.696 psia, 60% RH
 (2) With linear load
 (3) Approximate dimensions and weights
 (4) Clearance requirements may increase due to local code considerations
 Specifications are not warranted and are subject to change without notice.

