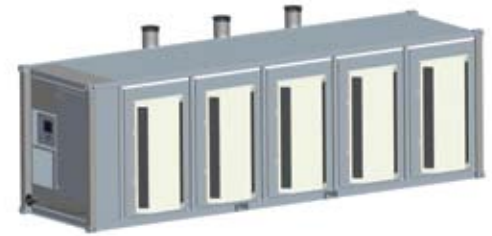


## C600 600kW Power Package Liquid Fuels



Achieve lower emissions and reliable electrical/thermal generation with diesel, kerosene or bio-diesel fuel.

- Lower utility costs – 33% electrical efficiency over a very wide operating range
- Cost savings – low maintenance air bearings require no lube oil or coolant
- Ultra-low emissions – better than tough, global standards
- High availability – partial load redundant, technology field proven over tens of millions of operating hours
- Easy, low cost installation – integrated utility synch and protection, modular design
- 5 and 9 year factory protection plans available
- Remote monitoring and diagnostic capabilities
- Upgradable to 800 kW or 1 MW with field installed Capstone 200 kW power module



C600 MicroTurbine

### Electrical Performance<sup>(1)</sup>

Electrical Power Output	600 kW
Voltage	400 to 480 VAC
Electrical Service	3-Phase
Frequency	50/60 Hz, grid connect operation 10-60 Hz, stand alone operation
Maximum Output Current	870A, grid connect operation 930A, stand alone operation <sup>(2)</sup>
Electrical Efficiency LHV	33%

### Fuel/Engine Characteristics<sup>(1)</sup>

Liquid Fuels	Diesel (ASTM D975-07b Grade Low Sulfur No. 1-D, 2-D) Bio Diesel (480034 Latest Revision) Aviation (ASTM D1655 Jet-A, MIL-DTL-83133E JP-8, MIL-DTL-5624U JP-5) Kerosene (ASTM D3699 1-K, JIS K2203)
Inlet Pressure – HHV dependent	-0.35 to +0.35 barg (-5 to +5 psig)
Fuel Flow HHV	7,200 MJ/hr (6,840,000 BTU/hr)

### Exhaust Characteristics<sup>(1)</sup>

Exhaust Gas Flow	4.0 kg/s (8.8 lbm/s)
Exhaust Gas Temperature	280°C (535°F)
Exhaust Energy	4,260 MJ/hr (4,050,000 BTU/hr)

*Reliable power when and where you need it. Clean and simple.*

## Dimensions & Weight<sup>(3)</sup>

Width x Depth x Height	2.4 x 9.1 x 2.9 m (96 x 60x 114 in)
Weight – Grid Connect Model	11475 kg (25,300 lbs)
Weight – Dual Mode Model	13326 kg (29,380 lbs)

## Minimum Clearance Requirements<sup>(4)</sup>

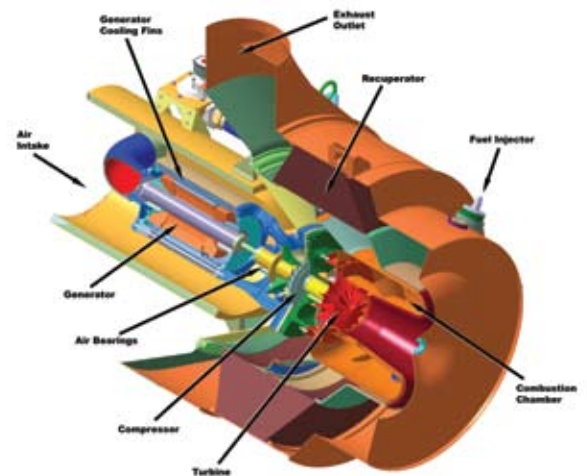
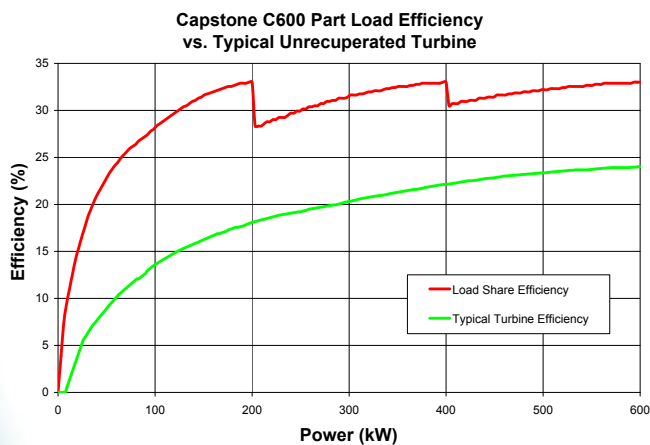
Vertical Clearance	0.6 m (24 in)
Horizontal Clearance	
Left & Right	1.5 m (60 in)
Front	1.5 m (60 in)
Rear	1.8 m (72 in)

## Sound Levels

Acoustic Emissions at Full Load Power	
Nominal at 10 m (33 ft)	65 dBA

## Planned Certifications

- Certified to UL 2200 and UL 1741
- Meets statewide utility interconnection requirements for California Rule 21 and the New York State Public Service Commission
- Materials Equipment Acceptance (MEA) approval for New York City
- Models available with optional equipment for CE Marking



C200 Engine

(1) Nominal full power performance at ISO conditions: 59°F, 14.696 psia, 60% RH  
 (2) With linear load  
 (3) Approximate dimensions and weights  
 (4) Clearance requirements may increase due to local code considerations  
 Specifications are not warranted and are subject to change without notice.

