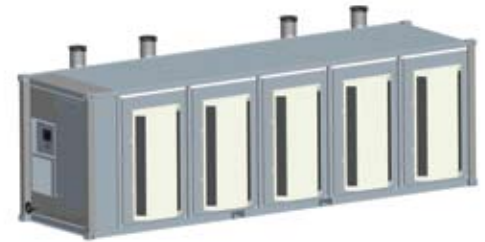


C800 800kW Power Package Liquid Fuels



Achieve lower emissions and reliable electrical/thermal generation with diesel, kerosene or bio-diesel fuel.

- Lower utility costs – 33% electrical efficiency over a very wide operating range
- Cost savings – low maintenance air bearings require no lube oil or coolant
- Ultra-low emissions – better than tough, global standards
- High availability – partial load redundant, technology field proven over tens of millions of operating hours
- Easy, low cost installation – integrated utility synch and protection, modular design
- 5 and 9 year factory protection plans available
- Remote monitoring and diagnostic capabilities
- Upgradable to 1 MW with field installation of Capstone 200 kW power module



C800 MicroTurbine

Electrical Performance⁽¹⁾

Electrical Power Output	800 kW
Voltage	400 to 480 VAC
Electrical Service	3-Phase
Frequency	50/60 Hz, grid connect operation 10-60 Hz, stand alone operation
Maximum Output Current	1160A, grid connect operation 1240A, stand alone operation ⁽²⁾
Electrical Efficiency LHV	33%

Fuel/Engine Characteristics⁽¹⁾

Liquid Fuels	Diesel (ASTM D975-07b Grade Low Sulfur No. 1-D, 2-D) Bio Diesel (480034 Latest Revision) Aviation (ASTM D1655 Jet-A, MIL-DTL-83133E JP-8, MIL-DTL-5624U JP-5) Kerosene (ASTM D3699 1-K, JIS K2203)
Inlet Pressure	-0.35 to +0.35 barg (-5 to +5 psig)
Fuel Flow HHV	9,600 MJ/hr (9,120,000 BTU/hr)

Exhaust Characteristics⁽¹⁾

Exhaust Gas Flow	5.2 kg/s (11.6 lbm/s)
Exhaust Gas Temperature	280°C (535°F)
Exhaust Energy	5,680 MJ/hr (5,400,000 BTU/hr)

Reliable power when and where you need it. Clean and simple.

Dimensions & Weight⁽³⁾

Width x Depth x Height	2.4 x 9.1 x 2.9 m (96 x 360x 114 in)
Weight – Grid Connect Model	12700 kg (28,000 lbs)
Weight – Dual Mode Model	14515 kg (32,000 lbs)

Minimum Clearance Requirements⁽⁴⁾

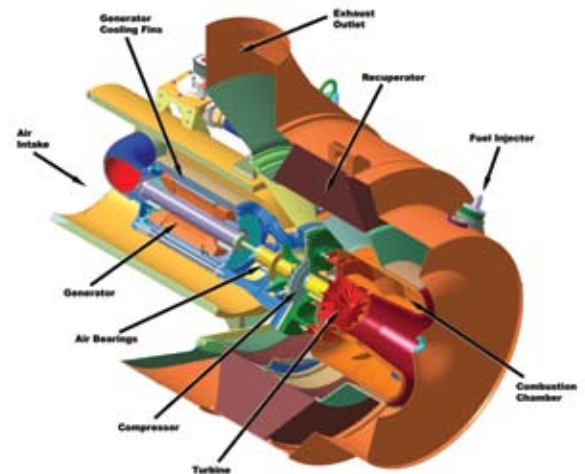
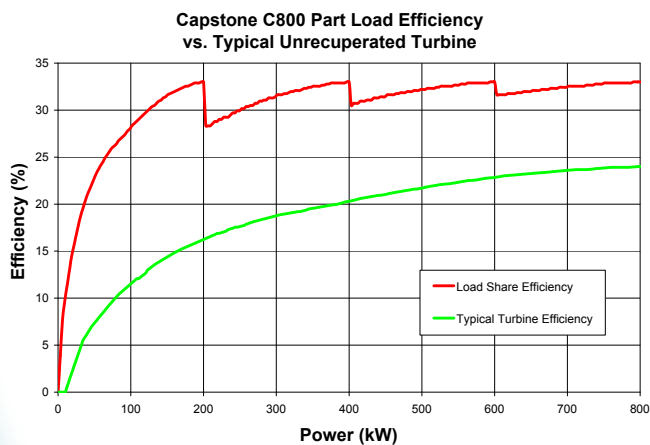
Vertical Clearance	0.6 m (24 in)
Horizontal Clearance	
Left & Right	1.5 m (60 in)
Front	1.5 m (60 in)
Rear	1.8 m (72 in)

Sound Levels

Acoustic Emissions at Full Load Power	
Nominal at 10 m (33 ft)	65 dBA

Planned Certifications

- Certified to UL 2200 and UL 1741
- Meets statewide utility interconnection requirements for California Rule 21 and the New York State Public Service Commission
- Materials Equipment Acceptance (MEA) approval for New York City
- Models available with optional equipment for CE Marking



C200 Engine

(1) Nominal full power performance at ISO conditions: 59°F, 14.696 psia, 60% RH
 (2) With linear load
 (3) Approximate dimensions and weights
 (4) Clearance requirements may increase due to local code consideration
 Specifications are not warranted and are subject to change without notice.

